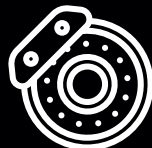


CARTEC



HEAVY DUTY VEHICLES



ROLLER BRAKE TESTER

ROLLER sets



Possibility of installation of the roller set in existing pits.

PRODUCT RANGE



413-BR

- For passenger cars/vans or trucks and trailers in unloaded condition
- Low to normal throughput



N version

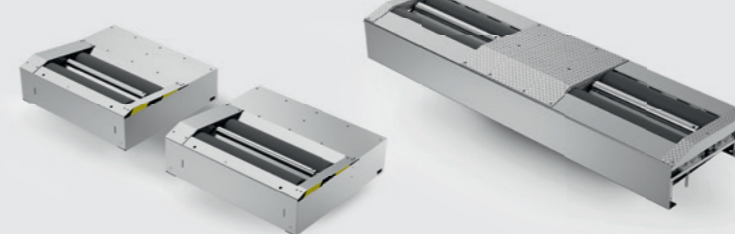


416-BR

- For empty or partially loaded vehicles and busses
- Normal to high throughput



N version



G version

K version



420-BR

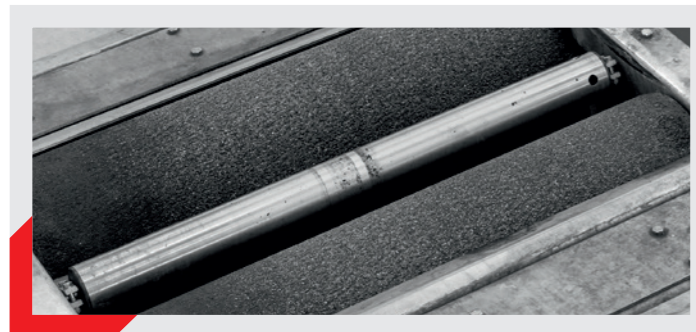
- For all kind of vehicles, also in loaded condition
- Normal to high throughput



N version

FEATURES

All models available in 1-speed or 2-speed, 2WD or 4WD configuration. With elevated or level rollers.



Rollers

- 1000, 1200 or 1300 mm length
- Corundum coated
- Steel, exclusive SmoothGrip design for spiked tyres
- Drive off the rollers through electro brake or automatic aid
- Rust-proof feeler rollers



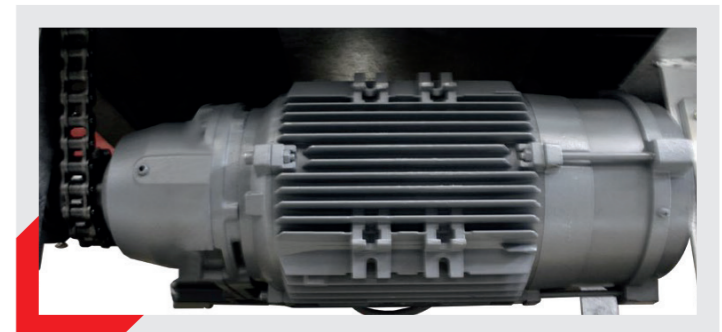
Frame

- Frame completely hot dip galvanized, not just the covers



Load cells

- Wear-free strain-gauge type load cells



Motor

- Splash proof motors
- All motors can be with brakes

FLEXIBLE CONFIGURATIONS Choose your solution



BASIC PACKAGE

Control unit



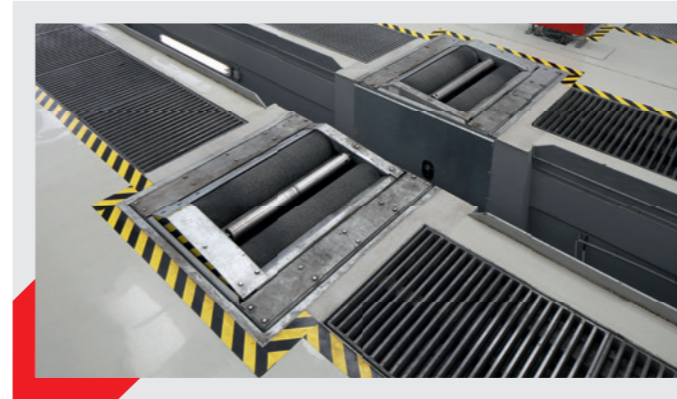
Different functionalities are opened via dongles, a revolutionary concept that guarantees the customer's investment for the future



DONGLE

- 2 speeds
- 1 speed + counter rotation (4WD)
- 2 speeds + counter rotation (4WD)
- 1 speed + PC connection
- 2 speeds + PC connection
- 1 speed + counter rotation (4WD) + PC connection
- 2 speeds + counter rotation (4WD) + PC connection

Roller set

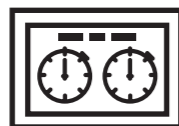


Radio remote control



DISPLAY MODULES

Multiple displays are necessary in installations with dual-direction testing and to test long vehicles and/or truck/trailer combinations



ANALOGUE

PLACE UP TO 3 ANALOGUE DISPLAYS IN YOUR WORKSHOP

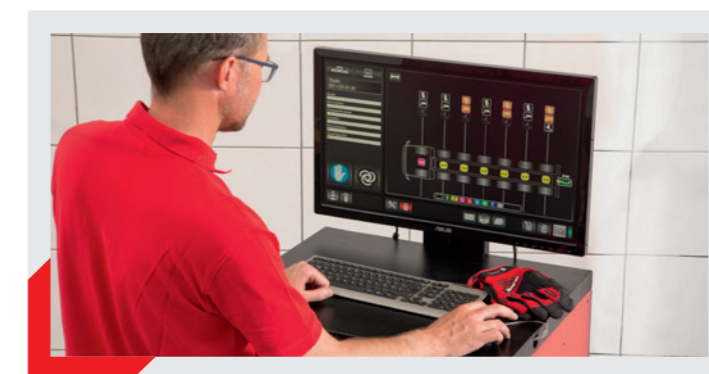
Analogue display



DIGITAL

PLACE UP TO 2 MONITORS AND/OR TABLET BEYOND THE WORKSTATION IN YOUR WORKSHOP

Workstation



Tablet



OPTIONALS



Pedal Pressure
transducers, cable-type or radio-controlled

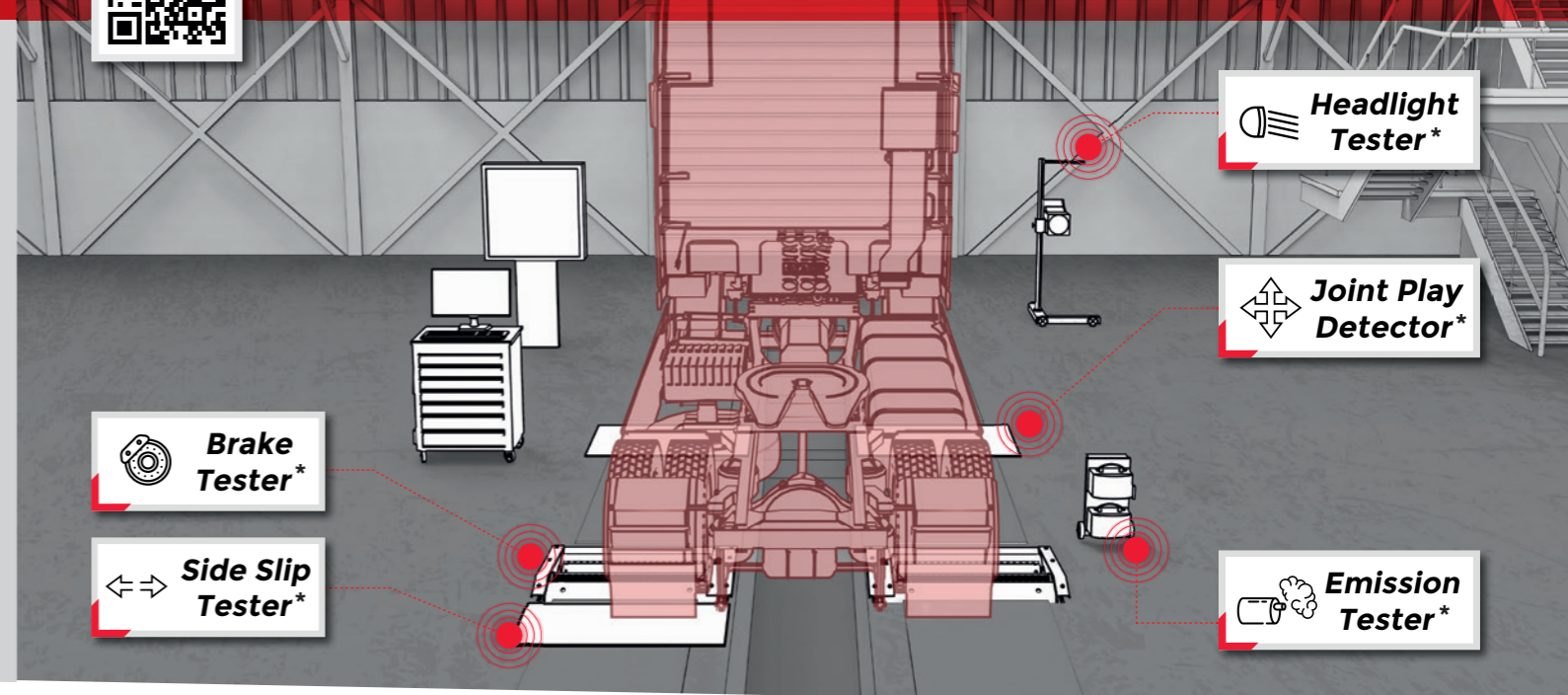


Pneumatic Pressure
transducers, cable-type or radio-controlled



* MORE INFO ON:
eu.cartec-equipment.com

TESTING SOLUTION PROVIDER



LOAD SIMULATOR

Pulling System

NSV 3000

- NSV 3000 pneumatic pulling system - can be used with all models



NSV 4000

- NSV 4000 hydraulic pulling system - can be used only in combination with 2ot version



Lifting System

HBV 3000

- HBV 3000 hydraulic lifting system to be used in combination with 16t (N) and 2ot versions, 1000 mm roller length
- The scope of the HBV 3000 is to achieve the minimum of 30% of the design brake actuator, prescribed by the ISO 21069 as requirement for the reliability of the calculated braking force



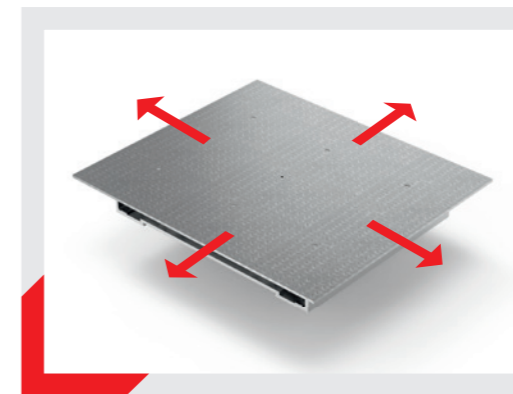
HBV 4000

- HBV 4000 hydraulic lifting system - can be used only in combination with 2ot version - 1000 mm roller length



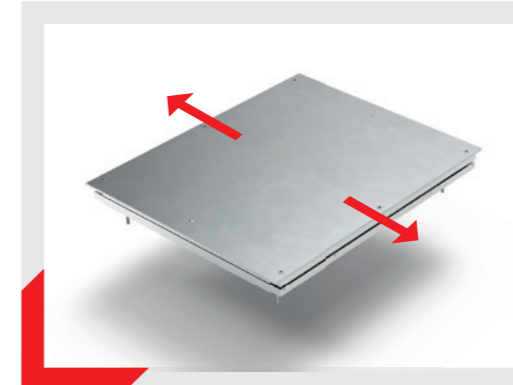
JOINT PLAY DETECTOR

- Operation with wireless test lamp
- Focused and bright LED light sources
 - Robust, shock- and break-proof housing



SIDE-SLIP TESTER

- Measures the dynamic toe of the vehicle
- Drive through measurement
- Plate length of 1000 mm



TECHNICAL DATA

		413-BR	416-BR	416-BR	416-BR	420-BR
Type of construction		N	N	G	K	N
Temperature range (without additional heating system)	°C	from 0 to +40	from 0 to +40	from 0 to +40	from 0 to +40	from 0 to +40
Power supply	V	3/N/PE 400 V AC	3/N/PE 400 V AC	3/N/PE 400 V AC	3/N/PE 400 V AC	3/N/PE 400 V AC
Frequency	Hz	50	50	50	50	50
Fuse rating - slow blow type	A	3 x 50	3 x 50	3 x 50	3 x 50	3 x 80
Drive-over axle load / axle	t	13	16	16	16	20
Test weight / axle (70% efficiency - ISO 21069)	t	7,5	8,6	8,6	8,6	11,4
Roller coefficient dry/wet		>0,7 / >0,5	>0,7 / >0,5	>0,7 / >0,5	>0,7 / >0,5	>0,7 / >0,5
Maximum brake force	kN	26	30	30	30	40
Motor power	kW	2 x 9,2	2 x 11	2 x 11	2 x 11	2 x 15
Test width min. - max.	mm	variable	variable	variable	952-2922	variable
Roller diameter	mm	205	255	255	204	255
Roller length	mm	1000	1000 (1300 opt)	1200	985	1000 (1300 opt)
Roller elevation	mm	30	50	50	30	50
Roller distance	mm	400	450	450	400	450
Idling speed	km/h	2,5 (2,5-5,0 opt)	2,6 (2,6-5,2 opt)	2,6 (2,6-5,2 opt)	2,6 (2,6-5,2 opt)	2,6 (2,6-5,2 opt)
Dimensions of the roller set (each)	mm	1240 x 700 x 610	1261 x 1093 x 718	1560 x 1380 x 480	3160 x 920 x 428	1261 x 1093 x 718
Dimensions of the control unit	mm	900 x 900 x 200	900 x 900 x 200	900 x 900 x 200	900 x 900 x 200	900 x 900 x 200
Dimensions of the analogue display unit	mm	1035 x 700 x 177	1035 x 700 x 177	1035 x 700 x 177	1035 x 700 x 177	1035 x 700 x 177
Size of the instrument panel	mm	925 x 590	925 x 590	925 x 590	925 x 590	925 x 590
Diameter of the analogue instruments	mm	325	325	325	325	325

eu.cartec-equipment.com

EMEA-JA
Snap-on Equipment s.r.l. · Via Prov. Carpi, 33 · 42015 Correggio (RE)
Phone: +39 0522/733-411 · Fax: +39 0522/733-479

Austria
Snap-on Equipment Austria GmbH · Hauptstrasse 24/Top 14 · A-2880 St. Corona/Wechsel (RE)
Phone: +43 1 865 97 84 · Fax: +43 1 865 97 84 29

France
Snap-on Equipment France · ZA du Vert Galant · 15, rue de la Guivernone BP97175
Saint-Ouen-l'Aumône · 95056 Cergy Pontoise CEDEX
Phone: +33 (0) 134/48 58-78 · Fax: +33 (0) 134/48 58-70

Germany
Snap-on Equipment GmbH · Konrad-Zuse-Straße 1 · 84579 Unterneukirchen
Phone: +49 (0) 8634 / 622-0 · Fax: +49 (0) 8634 / 5501

Italy
Snap-on Equipment s.r.l. · Via Prov. Carpi, 33 · 42015 Correggio (RE)
Phone: +39 0522/733-411 · Fax: +39 0522/733-410

United Kingdom
Snap-on Equipment Ltd. · Unit 17 Denney Road, King's Lynn · Norfolk PE30 4HG
Phone: +44 118 929-6811 · Fax: +44 118 966-4369



Part of the machines is illustrated with optional extras which are available at extra cost. Technical and visual modifications reserved. Cod.: 1912 001 · 12/2019

CARTEC