

*Test lane for 2-wheeled
scooters and motorbikes*

**GPS 005
speedometer
BDE 500 B
roller brake tester**



Test lane for 2-wheeled scooters and motorbikes

The brake tester

The concept

This test lane provides the optimal solution for the inspection of 2-wheeled scooters and motorbikes.

The equipment of the lane and the fastening systems available have been specifically designed to provide accurate tests whilst providing maximum safety for the operators.

The BDE 500 B

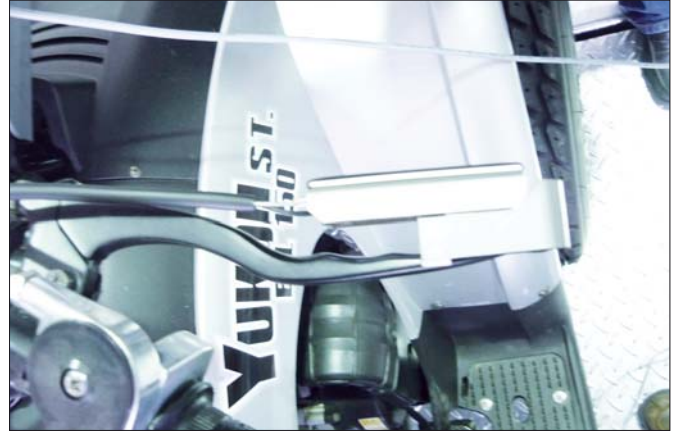
The BDE 500 B roller brake tester measures the braking forces on the wheel, the weight of the wheel and it calculates the resulting braking efficiency.

- Effective corrosion resistance is ensured with hot dip galvanisation.
- Steel rollers coated with a wear resistant resin guarantee reliable tests in any conditions and do not damage the tyres.
- Splash-proof motors.
- The measurement is carried out by well-proven strain-gauge type load cells free of the wear .

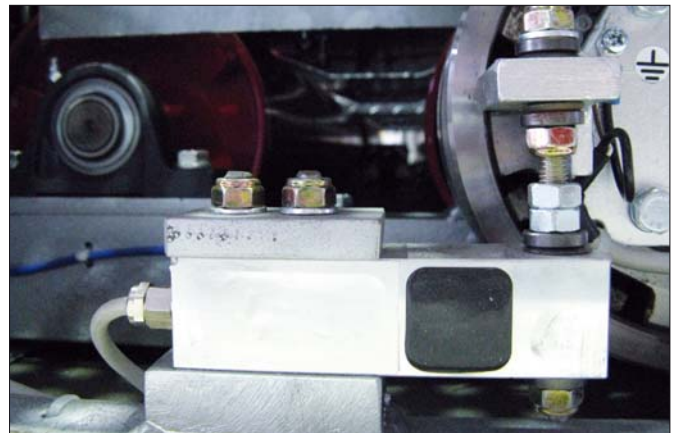
The roller brake tester is also available with self-braking motors

Transducers for command effort

A complete range of transducers to measure the command effort are available.



Software: main menu window



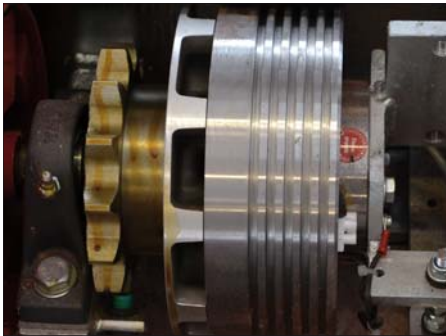
Test lane for 2-wheeled scooters and motorbikes

The speedometer and fastening system

The GPS 005

The speedometer GPS 005 measures the distance, test time, current test speed and maximum speed of 2-wheeled scooters up to 80 km/h. It can also be used combined with an exhaust emissions analyser to check the exhaust gases of no catalytic scooters and motorbikes

Eddy current brake

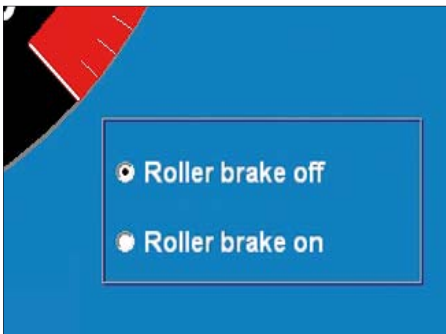


During testing the rolling resistance is simulated with an eddy current brake integrated in the bench.

GPS 005: Software

The user interface has been designed to be as simple as possible. Before the test the integrated standard pneumatic rollers brake is released. No other command parts are required. The test speed is displayed, rendering it even easier to use.

Activation of the roller brake



Measurement of the exhaust emissions

The firmware includes an open serial protocol in order to connect the GPS 005 directly to an exhaust emissions analyser, this allow the measurement of the emissions in conditions similar to road ones.

Warning lamp

The warning lamp indicates that the maximum speed limit of the speedometer has been reached.



Cooling device

The cooling device, consisting of a high capacity double electric fan, prevents the scooter from overheating during the test at maximum speed.



Fastening systems and accessories

The lane is supplied with a pneumatic or mechanically controlled vehicle fastening system. These systems ensure that the tests are carried out correctly and in complete safety for the operator and the vehicle.

A whole range of accessories is available as well all necessary devices for the calibration and maintenance of the equipment.

Mechanical fastening



Pneumatic fastening



Test lane for 2-wheeled scooters and motorbikes

Technical Specifications BDE 500 B

		BDE 500 B
Max. drive over/test load allowed	kg	500
Measuring range	kN	0 – 3
Idling test speed	km/h	5.5
Rollers diameter	mm	206
Rollers coating		Corundum
Rollers length	mm	300
Roller coefficient dry/wet		> 0.7 / > 0.6
Rollers distance	mm	400
Motor power	kW	1 x 2.5
Power supply		3 / N / PE 400 V AC
Fuse rating – slow blow type	A	3 x 16
Mechanical unit – dimensions	mm	1020 x 560 x 260
Mechanical unit – weight	kg	about 150
Anti-corrosion finish: galvanisation		DIN 50967-t Zno

Dati Tecnici GPS 005

		GPS 005
Max. drive over/test load allowed	kg	500
Minimum wheel diameter	mm	300
Max. test speed	km/h	80
Rollers diameter	mm	199
Rollers length	mm	300
Rollers distance	mm	300
Mechanical unit – dimension (L x W x H)	mm	557 x 663 x 266
Mechanical unit – weight	kg	100
Anti-corrosion finish: galvanisation		DIN 50967-t Zno
Max. braking power	W	4825
Power supply		1 N / PE 230 V AC
Fuses	A	16

EMEA-JA

Snap-on Equipment s.r.l. - Via Prov. Carpi, 33 - 42015 Correggio (RE)
Phone: +39 0522/733-411 - Fax: +39 0522/733-479 - www.cartec-europe.com

France

Snap-on Equipment France - ZA du Vert Galant - 15, rue de la Guivernone BP97175
Saint-Ouen-l'Aumône - 95056 Cergy Pontoise CEDEX
Phone: +33 (0) 134/48 58-78 - Fax: +33 (0) 134/48 58-70 - www.snapon-equipment.fr

Germany

Snap-on Equipment GmbH - Konrad-Zuse-Straße 1 - 84579 Unterneukirchen
Phone: +49 (0) 8634 / 622-0 - Fax: +49 (0) 8634 / 5501 - www.cartec-deutschland.com

United Kingdom

Snap-on Equipment Ltd.
Unit 17 Denney Road, King's Lynn - Norfolk PE30 4HG
Phone: +44 (0) 118/929-6811 - Fax: +44 (0) 118/966-4369
www.snapon-equipment.co.uk

Italy

Snap-on Equipment s.r.l.
Via Prov. Carpi, 33 - 42015 Correggio (RE)
Phone: +39 0522/733-411 - Fax: +39 0522/733-410
www.snapon-equipment.eu

